

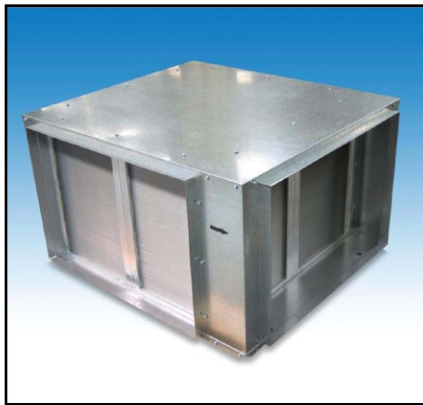
# Model CS & CH

## Heat Exchanger



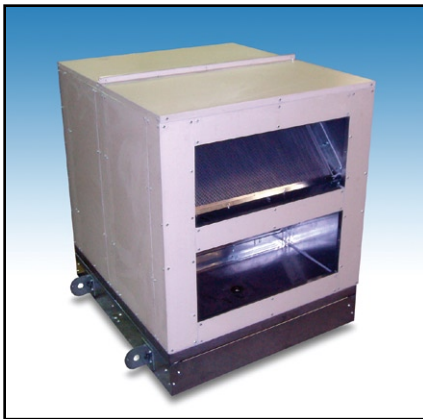
### Model CS

Heatex crossflow heat exchanger incased in a standard diamond configuration. Cabinet constructed with 18 GA Galvanized metal, including drain and drain pan.



### Model CH

Heatex crossflow heat exchanger incased in a horizontal configuration. Cabinet constructed with 18 GA Galvanized metal, including drain and drain pan.



### Options Available

- Double wall construction
- Insulation available: 1" x 1.5#, 2" x 1.5# or 3.0#
- Painted casing
- Aluminum casing
- Other casing material available upon request.
- For configurations and applications not shown please contact Heatex.

Owing to continued product development Heatex America reserves the right to introduce alterations both in design and prices without prior notice.



**Heatex AB**  
Tommarpsvagen 46  
SE-231 65 Trelleborg  
Sweden  
+46 410 71 05 00  
fax: +46 410 71 05 29  
www.heatex.com

**Heatex America**  
PO Box 254  
70 Douglas Way  
Natural Bridge Station  
Virginia 24579, USA  
540.291.4001  
fax: 540.291.4002  
www.heatexamerica.com

**Heatex Shanghai  
Co Ltd**  
No.302, Xiangmao Road  
Songjiang District,  
201611 Shanghai, China  
+86 21 33508399  
fax: +86 21 33508394  
www.heatexchina.com

**Heatex Brasil**  
Rua Eleuterio C. Pinheiro, 94  
88332-210, Balneario Camboriu, SC  
Brazil  
: +55 47 3366 2733  
fax: +55 47 3366 2733  
e-mail: info@heatex.com.br